



SharePoint Governance

Anders B. Skjønaa, Netmedia Software

anders@netmedia.as

Session overview

- The governance primer...
- The SharePoint Governance Framework
- Governance for SharePoint 2010?
- Ten governance tips to remember...
- Governance Q&A

My Profile / Categories / Tags

Anders B. Skjønaa

Netmedia Software
Partner, CEO

Categories:
Strategy, Governance, Adoption

SharePoint **Sailing** Denmark
Microsoft **Consulting** Information Work
Governance ICASA Speaker
Italy **Training** Kids **Basketball**

Web: www.netmedia.as
Mail: anders@netmedia.as



Let's connect....



@skjoenaa



www.linkedin.com/in/skjoenaa



#anders.skjoenaa



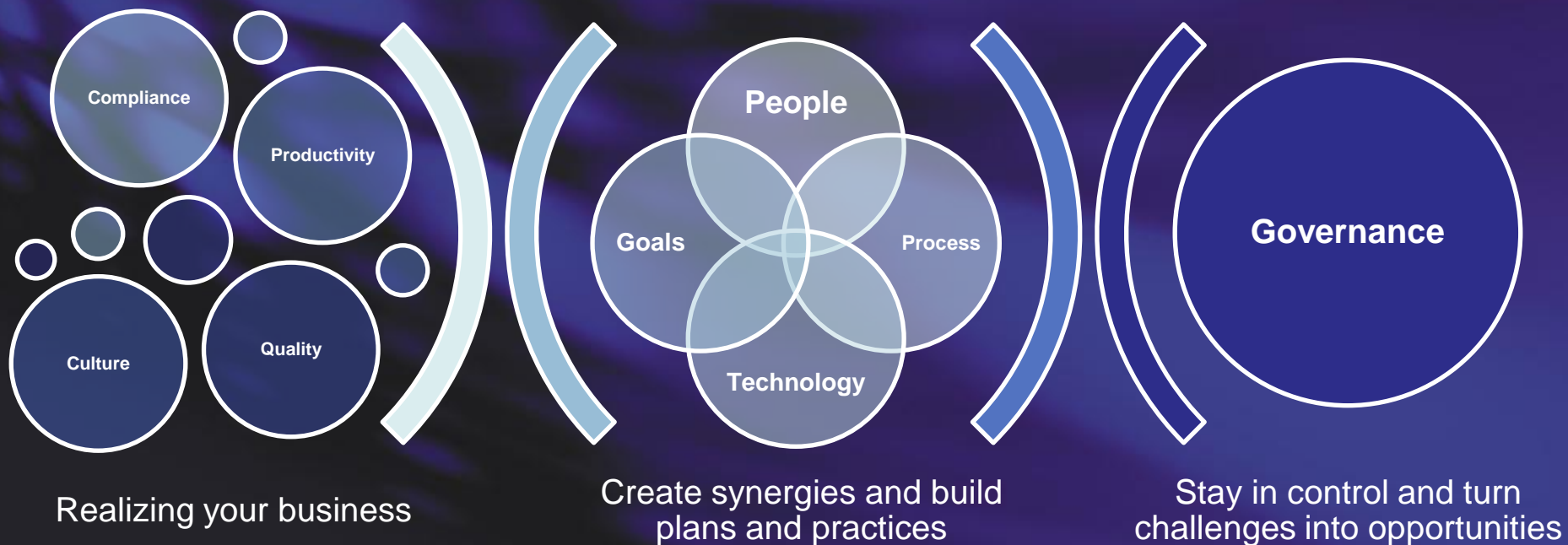
sharepointpeople.wordpress.com

Governance Primer...

- Maximize the potential for providing business value
- Reduction in risk during deployment
- Ensuring compliance
- Making sure that there are no gaps in accountability
- There is appropriate steering of the service
- The solution can scale with growth & increased usage



In other words....



"Royal pains..."

- Developing a governance plan CAN be extremely time and resource consuming
- How do we make sure that we cover all bases?
- Governance needs to be made operational to have ANY impact in the organization
- How do we make the effect of our efforts visible to the management?
- By the way... Who is really the owner of SharePoint governance?

Most asked question:

What did all the other companies do?

Governance adoption

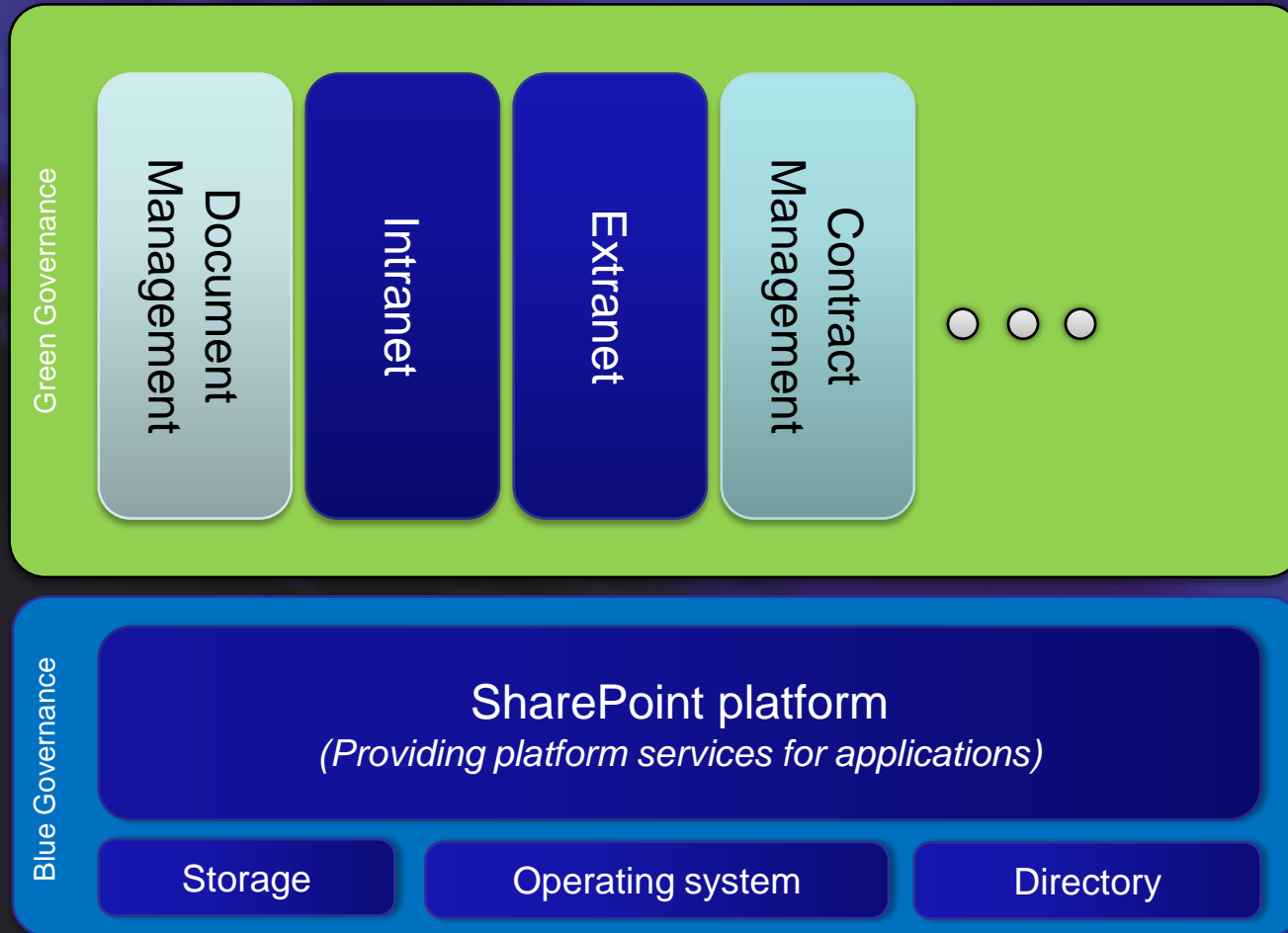
- 68% of SharePoint projects do not include governance
- 93% (of those that do) start planning AFTER going into production
- None of these projects use a formal governance framework or methodology
- 75% of governance plans are not maintained after 3 months
- More than 50% redo parts - or all - of the SharePoint planning after 12-18 months

*Based on internet survey made by Netmedia Software in 2008/2009

"Traditional" SharePoint Governance



Full platform governance



"**Green Governance**" relates to applications and typically has a business focus

Examples:

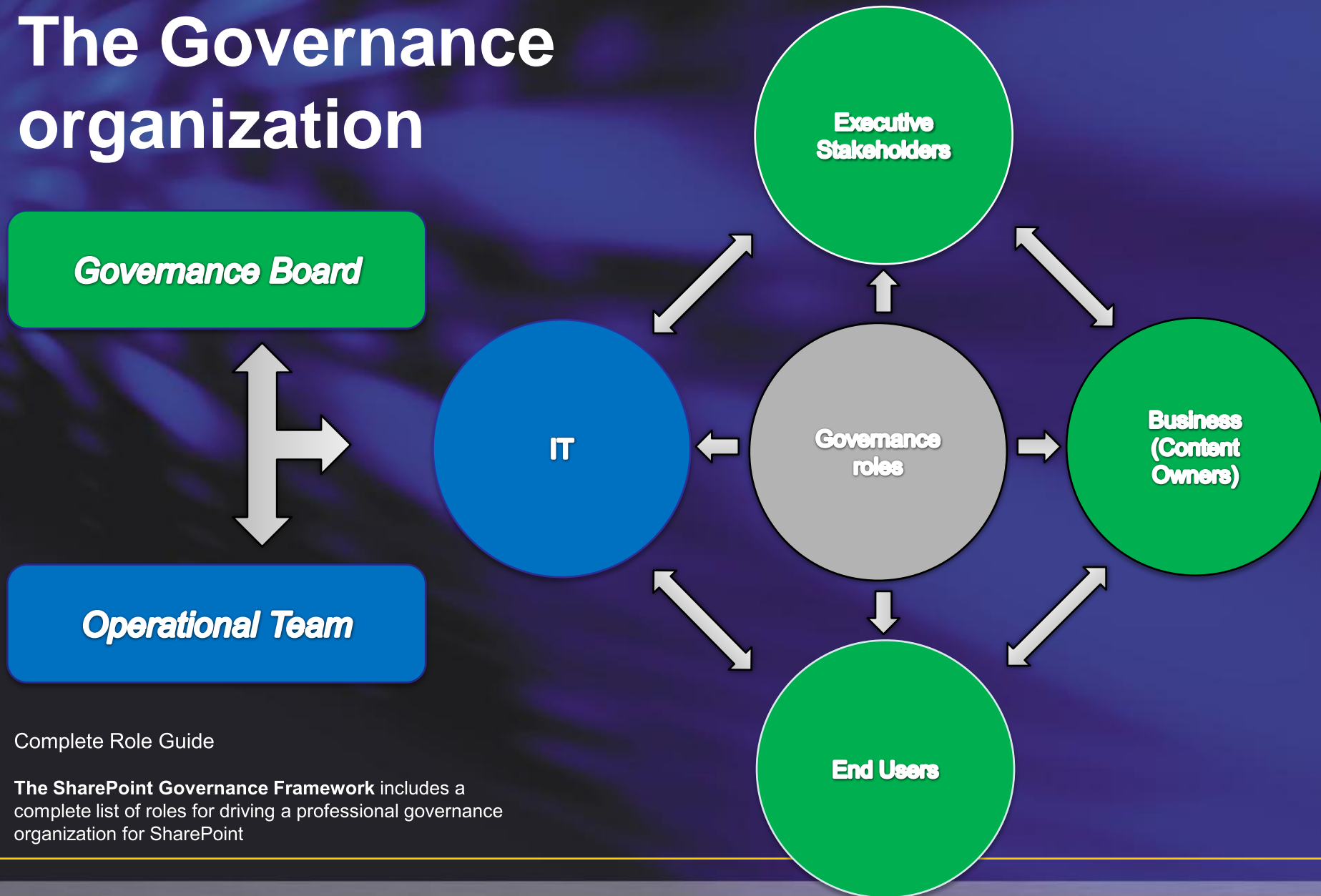
- Regulatory Compliance
- Update frequency
- Branding
- Taxonomi (Metadata and tagging)
- Workflow / proces latency
- Training / Adoption

"**Blue Governance**" relates to the SharePoint Service and has a focus on driving the platform from a technical point of view

Examples:

- Availability
- Application "on-boarding"
- Backup / Restore procedures
- Scalability
- Change Request procedures
- Security
- Etc.

The Governance organization

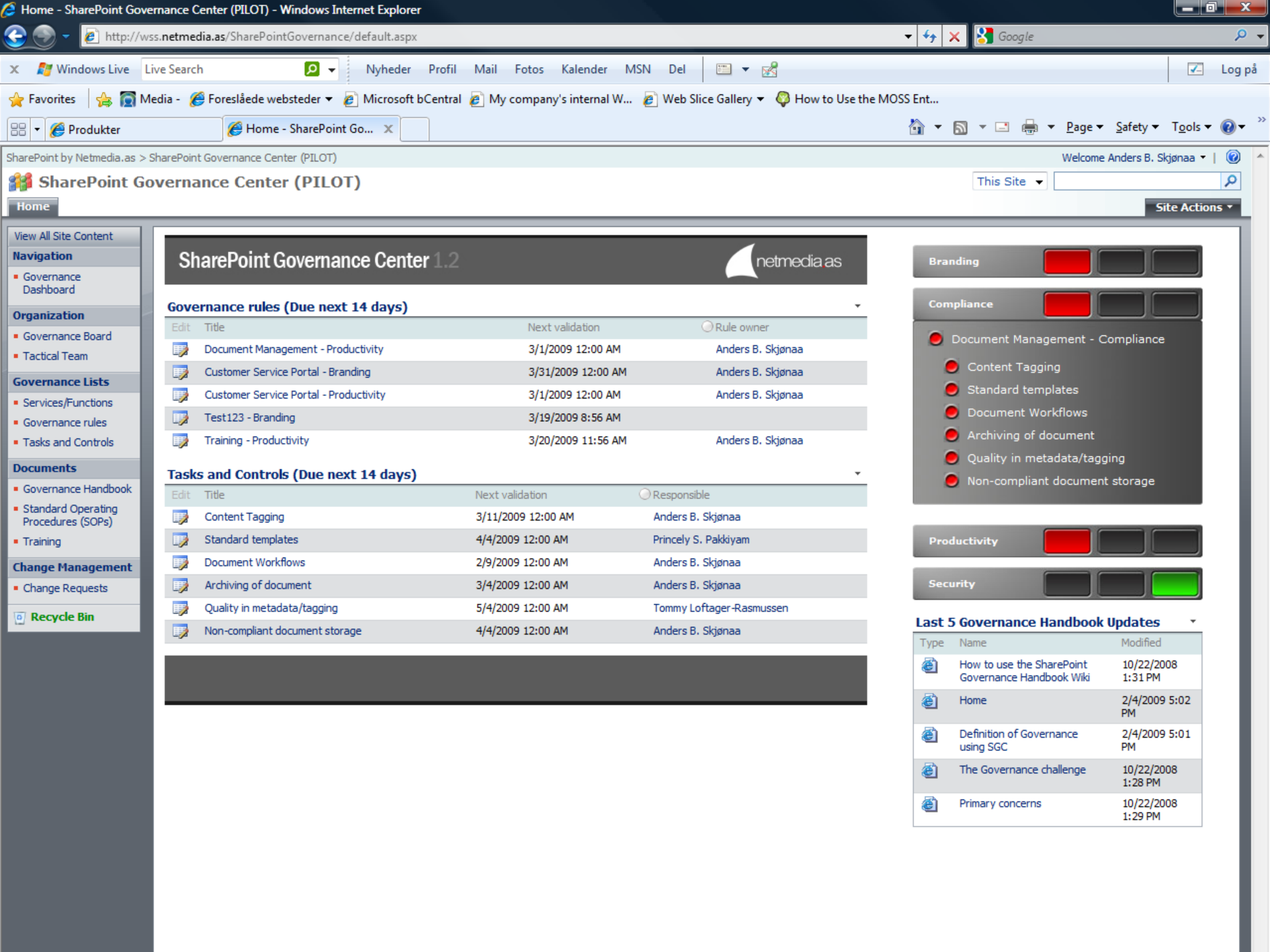
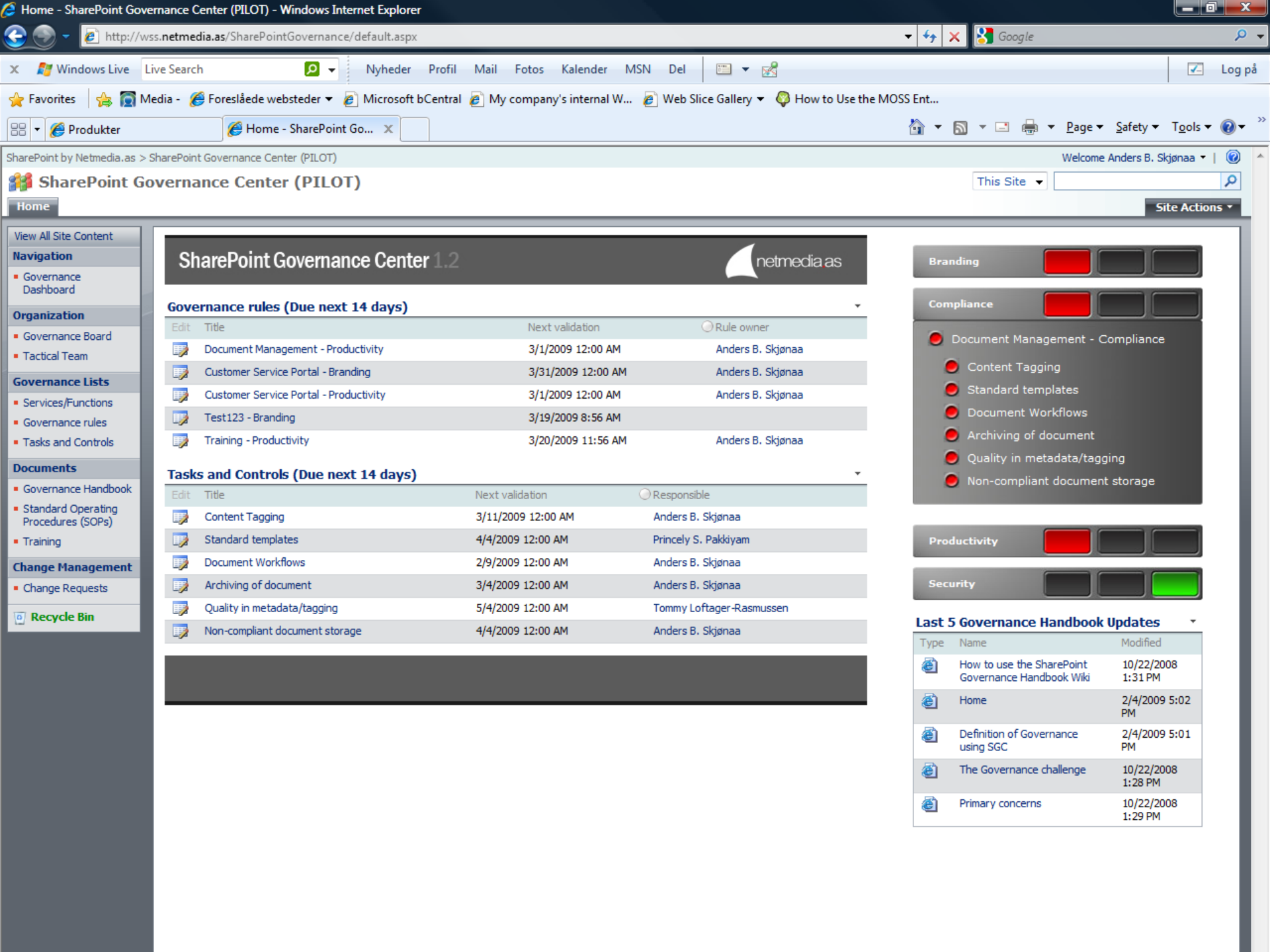


Complete Role Guide

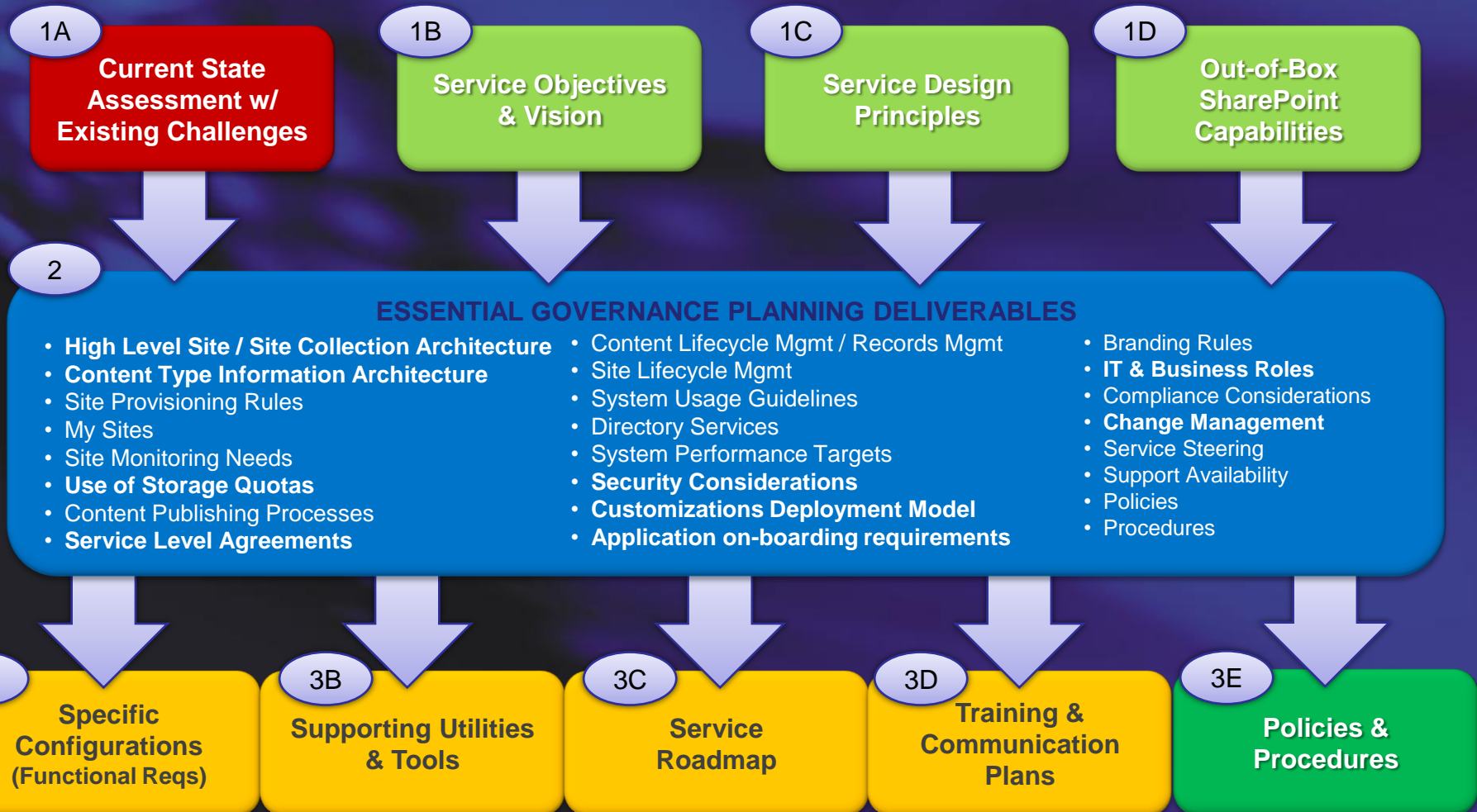
The **SharePoint Governance Framework** includes a complete list of roles for driving a professional governance organization for SharePoint

The SharePoint Governance Framework





SharePoint Service Governance concept



SharePoint Governance Considerations

Process/Procedural

Design/Configuration

Microsoft
SharePoint
Server 2010

Executing Legal Holds
Training on Social Network Policy
Deploying Custom Webparts
Community Involvement Incentives
User and Organization Profiles
Managing Server Accounts
Certifying Delegated Admins
Record Disposal Process
Reporting Abuse
Integration scenarios
Patches and updates

Sandbox Solutions
Custom Help
Granular Backups
In-Place Records Mgmt
Server Resources Quota
Advanced Doc Routing
Managed Metadata
Tags
Staged Retention
Tag Inheritance
Feedback Ratings
Offline Workspace
User Site Themes
Unique Doc IDs
Activity Feeds
Server Health Analyzer

Microsoft
Office
SharePoint
Server 2007

Managing Access Rights
Branding Rules
Content Confidentiality
Training
User Provisioning
Regulatory Compliance
Requesting a Collaboration Site

Consistent Global Navigation
Site Provisioning
Provisioning of AD Security Groups
Info Mgmt Policies
Site Templates
Quotas
Content Types
Microsoft TechNet

Cool feature: SharePoint Health Analyzer

- Feature in SharePoint Foundation 2010, available for farm admins.
- Automatic checks for problems; performance, configuration, usage etc.
- Architecture
 - Health rules
 - SharePoint 2010 ships with a set of built-in rules
 - SPHealthAnalysisRule, SPRepairableHealthAnalysisRule classes available for extending the health analyzer
 - Health reports
 - Available in Central Administration / Monitoring

Cool feature: SharePoint Health Analyzer

The screenshot shows the SharePoint 2010 Central Administration interface. At the top, there's a navigation bar with 'Site Actions', 'Browse', and 'Page' tabs. A 'Give Feedback' button and the user name 'Anders Skjoenaa' are also visible. Below the navigation bar, the Microsoft SharePoint 2010 logo and 'Central Administration' text are displayed. On the right, there are 'I Like It' and 'Tags & Notes' icons. A red banner at the top of the main content area states: 'The SharePoint Health Analyzer has detected some critical issues that require your attention. [View these issues.](#)'

The main content area is divided into several sections:

- Central Administration** (left sidebar):
 - Application Management
 - System Settings
 - Monitoring
 - Backup and Restore
 - Security
 - Upgrade and Migration
 - General Application Settings
 - Configuration Wizards
- Application Management**:
 - Manage web applications
 - Create site collections
 - Manage service applications
 - Manage content databases
- Monitoring**:
 - Review problems and solutions
 - Check job status
 - View Web Analytics reports
- Security**:
 - Manage the farm administrators group
 - Configure service accounts
- General Application Settings**:
 - Configure send to connections
 - Configure content deployment paths and jobs
 - Manage form templates
- System Settings**:
 - Manage servers in this farm
 - Manage services on server
 - Manage farm features
 - Configure alternate access mappings
- Backup and Restore**:
 - Perform a backup
 - Restore from a backup
 - Perform a site collection backup
- Upgrade and Migration**:
 - Convert farm license type
 - Check product and patch installation status
 - Check upgrade status
- Configuration Wizards**
- Resources**:
 - There are currently no favorite links to display. To add a new link, click "Add new link".
 - [+ Add new link](#)



Central Administration ▶ Review problems and solutions : All Reports ▼

The Health Analyzer Reports list is created by the system to store archived reports from the Health Analyzer.












I Like It



Tags & Notes



Central Administration	Title	Failing Servers	Failing Services	Modified
Application Management	Category : Security (3)			
System Settings	 Accounts used by application pools or service identities are in the local machine Administrators group.	DEMO2010A	SPTimerService (SPTimerV4)	1/15/2010 6:21 AM
Monitoring	 The server farm account should not be used for other services.		SPTimerService (SPTimerV4)	1/15/2010 6:37 AM
Backup and Restore	 The Unattended Service Account Application ID is not specified or has an invalid value.		VisioGraphicsService	1/15/2010 12:00 AM
Security	Category : Performance (1)			
Upgrade and Migration	 Databases exist on servers running SharePoint Foundation.	DEMO2010A	SPTimerService (SPTimerV4)	1/15/2010 6:21 AM
General Application Settings	Category : Configuration (5)			
Configuration Wizards	 Missing server side dependencies.		SPTimerService (SPTimerV4)	1/15/2010 6:36 AM
	 Outbound e-mail has not been configured.		SPTimerService (SPTimerV4)	1/15/2010 6:37 AM
	 Databases running in compatibility range, upgrade recommended.		SPTimerService (SPTimerV4)	1/15/2010 6:33 AM
	<input type="checkbox"/>  Recommended server upgrade available.		SPTimerService (SPTimerV4)	1/15/2010 6:33 AM
	 Built-in accounts are used as application pool or service identities.		SPTimerService (SPTimerV4)	1/15/2010 6:21 AM
	Category : Availability (1)			

Governance Summary – Advisors Top Ten

1. Yes – governance STILL needed in SharePoint 2010!
2. Use a structured approach – frameworks are available, experienced people too...
3. Get executive buy-in – visible commitment is the key!
4. Set goals for the SharePoint service
5. Think operational
6. Measure and report
7. Don't over do it!
8. Build a service catalogue and roadmap
9. DONT write a governance plan!
10. Get trained for the job

Questions

Let's connect....



@skjoenaa



www.linkedin.com/in/skjoenaa



#anders.skjoenaa



sharepointpeople.wordpress.com

Connect for more information and discussions

Anders B. Skjønaa

anders@netmedia.as